

Silt Dispersal & Pile De-burial - Nigg, Scotland

Project Overview

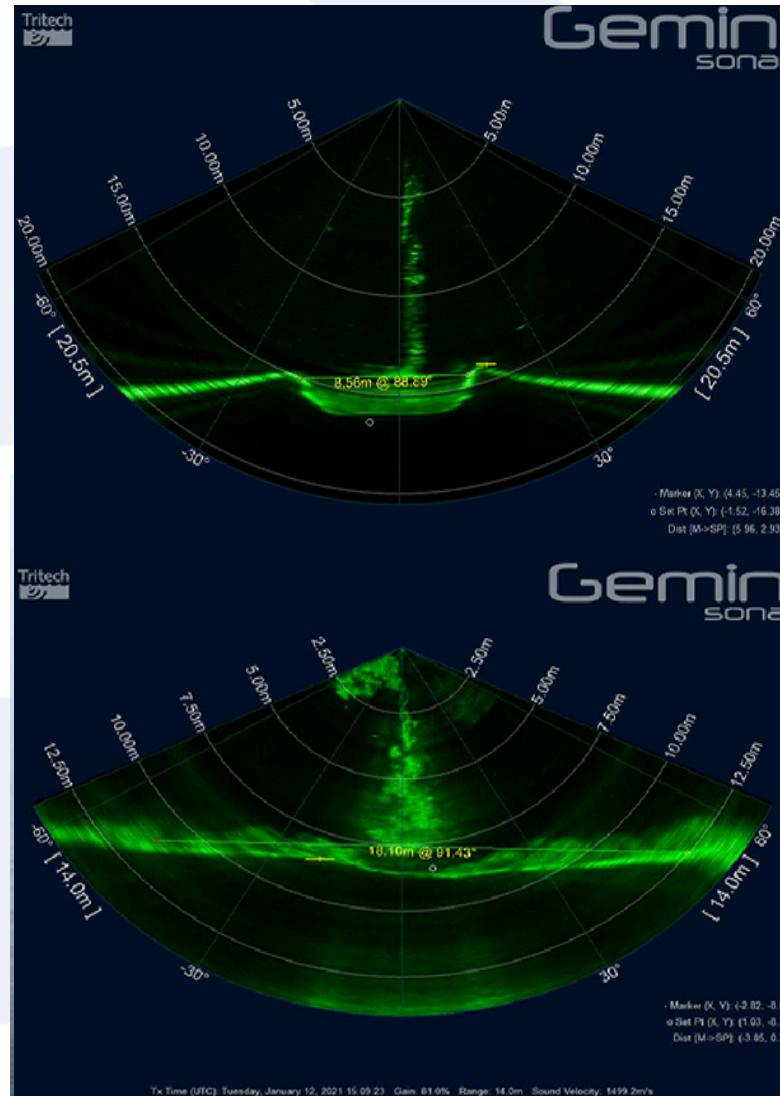
Rotech Subsea was contracted by Global Energy Group to carry out silt dispersal and pile de-burial operations on a dock gate in the Highlands, Scotland. Over time, silt had accumulated along the dock gate sill, creating access issues. In addition, four piles required de-burial to facilitate cutting operations. The works were executed efficiently within a short timeframe between the 7th and 13th of January 2021.

The Rotech Solution

Rotech deployed its RS2 Controlled Flow Excavation (CFE) tool, chosen for its high-volume output and effectiveness in displacing large amounts of subsea material. The RS2 system was mobilised aboard the old Cromarty Ferry and operated in water depths of up to 15 metres. The tool was used both to clear silt from the dock gate entrance and to de-bury the specified piles.

Results

The RS2 CFE tool successfully cleared 0.6 metres of silt across the 120-metre dock entrance through multiple passes. Additionally, it removed 5.5 metres of sand from a natural sandbank to the east of the gate, improving vessel access. The four piles were each de-buried to a depth of 3 metres and width of 8 metres, with an average excavation time of approximately three minutes per pile. The project demonstrated the efficiency and capability of the RS2 tool in challenging working conditions.



Project Information

Client: Global Energy Group

Scope: Silt Dispersal & Pile De-burial

Water Depth: 10m - 15m

Soils: Silt/ loose material

Vessel: Rosehaugh